

REACH

Lift your hands to heaven

Climb to new heights

HIGHER

DEEPER

Search the depths of your soul

Expand your mind beyond limits

FURTHER

Not an event, an EXPERIENCE! Youth2003 will draw United Methodist youth from around the globe to form a spiritual community dedicated to growth in Christ. Youth will encounter a diversity of culture, ministry, and opportunities.

Youth2003 is about transforming lives and sending youth back to their home communities as stronger disciples of Jesus Christ.



YOUTH03

REACH

YOU'LL SEE IT!

The University of Tennessee, Knoxville – you'll remember it and love it, as well as the brand new Knoxville Convention Center and the World's Fair Park. What an exciting atmosphere for Youth2003!

Knoxville ...

- Located within a day's drive of 75% of the United States population;
- Rests in the foothills of the Great Smoky Mountains National Park;
- Sits at the crossroads of I-75, I-40, and I-81;
- Is home to The University of Tennessee, founded in 1794, the nation's first coed higher education institution;
- Will host thousands of United Methodist youth July 23 - 27, 2003.

REACH YOU'LL MEET THEM!

Lots of really 'sweet' and faith-filled people will be sharing the main stage at the large gathering times. Here are a few of them . . .



Each day **Bishop Mary Ann Swenson** (California-Pacific Annual Conference) and **Bishop Violet Fisher** (North Central and Western New York Annual Conferences) will partner with youth from their conferences to search and explore the Bible. They will point to God's work in the lives of youth and show how the Holy Spirit reveals ways that youth can REACH DEEPER.



Youth will be immediately engaged by **Stephen Handy's** spirit and enthusiasm. As the opening speaker, Stephen will share his passion for helping people understand the relevance of the Christian faith. He will introduce our theme on Wednesday: REACH, and will sketch the shape of our time together. Stephen is active in the Nashville, TN community and is Director of Sales at The United Methodist Publishing House.

REACH YOU'LL FEEL IT!

The weather may be **HOT** but you'll be **COOL!**

All housing areas are air-conditioned and within a mile of the center of the UT Campus.

The design of the event will create a United Methodist campus community where you will move, live, be entertained and inspired. Oh, and there will be walking! This is a **WALKING** event (on hills, no less!), but what a great time to bond with your group, get to know new friends, or discuss the great Bible studies and workshops! **Make the most of it!** Bus transportation will be available for those who need it.

www.Youth2003.org



On Thursday night, **Duffy Robbins** will challenge youth to REACH HIGHER in the faith. Duffy chairs the Youth Ministry Program at Eastern College, St. David's, PA. Following his passions, Duffy speaks with youth and youth leaders around the U.S. You'll find his ideas fresh and his popularity undeniable.



Jay Williams is a man on the go, junior at Harvard, co-leader of the United Methodist Shared Mission Focus on Young People, activist, and board member of the General Council on Ministries. Whew! But more than that, Jay is a man of faith who has found ways to live out his life by REACHING FURTHER to embrace the world and make a difference. You'll hear his story Saturday night.



Always a crowd favorite, the **Rev. Grace Imathiu** combines storytelling, humor, and a real connection with youth to inspire and challenge. Grace is engaging, entertaining, and prophetic. She will send us home Sunday morning to REACH . . . HIGHER, DEEPER, FURTHER as an expression of our experiences at Youth2003.

REACH YOU'LL DO IT!

There will be **4** "Destinations" or hubs of activities around campus. These hubs will be designed for exploring faith, meeting people, and having fun! There will be unique things to do at each one – a variety of worship styles, live music, lots of hands-on activities, getting-to-know-each-other times, and even getting-to-know-yourself opportunities as well. Visit them all to collect special mementos from The Reef, The Wilderness, The Summit, and The Village! So much to do, so little time – no way you can do it all!

YOUTH03

REACH YOU'LL LIVE IT!

Sign me up! The registration fee includes:

THE USUAL STUFF

- Housing – 4 nights
- Meals – 11 delicious treats
- Transportation – from the Knoxville airport

THE EXTRAORDINARY STUFF

- Incredible concerts
- Challenging Bible studies
- Hundreds of informative & innovative workshops
- Service learning options
- You-Name-It-We-Got-It recreation options
- THOUSANDS OF UNITED METHODIST YOUTH

REACH YOU'LL HEAR IT!

Music, central to the lives of youth, will surround you at Youth2003 at a variety of venues. You won't want to miss the live concert performances by incredible artists! There will be smaller stage concerts for a more intimate experience and performances at the various destinations throughout the event. And youth will be invited to jam too, so bring your instruments!



Music will greet you, carry you through the experience of Youth2003, and send you home with a song in your soul. You can find an updated list of performers at www.youth2003.org.



THE Global Gathering of United Methodist Youth

REACH YOU'LL EXPERIENCE IT!

The Bible study and worship at Youth2003 will fill Thompson Boling Arena with music, energy, and excitement! The speakers and youth will join in times of learning and inspiration. And worshipping God won't be just a one-time thing! Daily Morning Watch and Devo'Time will feed your soul and spirit from start to finish. Jurisdictional gatherings will 'happen' too – a great way to meet people from your part of the world.

REACH YOU'LL LEARN IT!

So many workshops, so little time! Youth will have five opportunities to learn, grow, experience, and serve God through innovative, high quality workshop options. There will be something for everyone – introverts and extroverts, talkers and thinkers, both new and mature Christians, musicians and athletes. Nearly 500 workshop options fall into these categories:


- Getting Back to the Basics
- Stories and How They Relate to Us Today
- The World of Media and Technology
- Performing and Creative Arts
- Teen Issues and Struggles
- High Adventure
- Hot Topics
- Daily Christian Living
- Service and Mission
- Leadership Development

Check the web for all the descriptions. As soon as your group's registration is received, you'll be sent a confirmation packet containing the workshop descriptions and registration forms for each person to review and make selections.

reach higher, deeper, further

Youth2003 Schedule

Higher, Deeper, Further

Wednesday July 23		Thursday July 24	Friday July 25	Saturday July 26	Sunday July 27
7-8am		Morning Watch	Morning Watch	Morning Watch	Morning Watch
7-9am		Breakfast	Breakfast	Breakfast	Breakfast
9:30-11:30	Check in	Morning Program Bible Study and Music	Jurisdictional Morning Programs	Morning Program Bible Study and Music	Worship and Sending Forth
11:30-2pm		Lunch / Destinations	Lunch / Destinations	Lunch / Destinations	Check out
2-5pm	Check in	2 Workshop Sessions	1 Workshop / Destinations / Exhibits	2 Workshop Sessions	
5-7pm	Dinner	Dinner / Destinations Concerts	Dinner / Destinations Concerts at Exhibit Area	Dinner / Destinations Concerts	
7:30-10pm	Opening Program	Evening Program – Worship / Celebration	Bible Study Main stage concert	Evening Program – Worship / Celebration	
11pm	Devo'Time	Devo'Time	Devo'Time	Devo'Time	

THE Global Gathering of United Methodist Youth

www.Youth2003.org

REGISTRATION

Registration is EASY! But register fast! This event sold out in '99 – space will go quickly! Early registration fee: \$335 per participant. The registration fee and payment schedule are as follows FOR ALL YOUTH AND ADULTS.

**March 1, '02 – January 31, '03
Early Fee: \$335**

\$50 deposit holds space for 1 person.

Second payment of \$100 per person is due March 3, '03 from those who registered between March 1, '02 and January 31, '03.

**February 1 – May 30, '03
Regular Fee: \$360**

\$150 deposit is required to hold space for one person.

May 31, '03 – Late Fee: \$375
Remaining unpaid balances from all registrants due at this time.

CANCELLATION POLICY:

A \$25 cancellation fee will be retained for all cancellations received on or before March 3, '03. After March 3, '03, a \$50 fee will be retained. No refunds available after July 1, '03. Substitutions are welcome at any time. Changes to an existing registration are subject to a \$15 change fee.

SIGN UP NOW!

Registration Instructions:

To ensure space for your group, we encourage you to **register early**. Housing will be assigned on a first-come, best-served basis. You can secure space and lock in your registration fee by sending in your \$50 per person deposit today.

Group Leaders MUST see expanded explanation of each step, found at www.youth2003.org. To request the expanded explanation in print form, contact the Youth2003 Office: toll-free, 877-899-2780, Ext. 7134; youth2003@gbod.org; (fax) 615-340-7071; Youth2003, Attn: Rebecca Frame, PO Box 340003, Nashville, TN 37203-0003.

Step 1: Complete the church group registration form, reserving the youth and adult spaces you need. A \$50 deposit for each participant must be included. One check per group, please.

Register 1 adult age 21+ for every 8 youth age 18 or younger. If there are both male and female youth, there must be at least one adult age 21+ of each gender. At least one adult who comes with your group must be age 25+. Individual names are not needed at this time; however, \$25 of your per-space deposit is non-refundable. All financial records will be maintained under the Group Leader's name. Only the Group Leader can add, remove, or substitute members within the group.

Step 2: Send your form and payment to the listed address.

Step 3: In 2-3 weeks, you will receive a receipt and confirmation of your registration. Additional information will be sent after September 1, 2002.

Step 4: After September 1, 2002, you will be sent an additional confirmation packet that includes individual registration forms.

Step 5: Additional payment of \$100 per person due February 1, 2003. Registrations submitted after this date must be accompanied by \$150 deposit.

Step 6: After all of your group's individual registration forms are received, a final confirmation will be forwarded to you in the Spring of 2003.

Step 7: Complete paying your balance due by June 2, 2003.

REACH YOU'LL SURF IT!

You can find all this and more at www.youth2003.org.

This official site will grow as the event draws near.

Visit regularly for the latest updates!

SCHOLARSHIP APPLICATION

Limited scholarships available until March 1, 2003, from Youth2003 and the United Methodist General Board of Discipleship. However, Youth2003 urges applicants to first solicit personal financial aid from their local church, district, conference, and jurisdiction (preferably in that order) before applying for a scholarship. Scholarship application should be made by the applicant's pastor. For an application, write Youth2003, PO Box 340003, Nashville, TN 37202-0003, youth2003@gbod.org. No scholarships granted for amount greater than cost of event registration. No "comp" registrations issued.

SECURITY & HOUSE RULES

Although there will be ample uniformed and "T-shirt" security during the event, each youth group must provide its own supervision and discipline. Curfews will be enforced every night. Mandatory ratio of supervision: 1 adult (21 years+) to 8 youth. Every Youth2003 participant must sign the Youth2003 Covenant which explains and signifies agreement with event policies. See www.youth2003.org for Sample Covenant or call toll-free 877-899-2780, Ext. 7134.

HOUSING & MEALS

Registration fee includes housing and all meals. Housing will be provided using a combination of (air-conditioned) Residence Halls and hotels. Residence Hall accommodations include high-rise buildings with suite and apartment-style housing and semi-private baths; and standard residence halls with two beds per room and baths in private facilities down the hall. All buildings will be coed, but there will be gender separation by floor or building wing. All rooms will be gender-specific and assigned after consultation with adult leaders. Youth will room only with youth; adult leaders will room only with adult leaders, unless special circumstances exist.

A full breakfast and dinner will be served in an assigned cafeteria or dining hall near where you are housed. Lunch (a sandwich-type meal) will be served outdoors at several locations. Also, there are numerous locations throughout the campus and meeting venues where snacks can be purchased (at participants' expense). Indicate special dietary requirements on Individual Registration Form (see step 4, sign-up information).

Check-in begins 10:00am July 23 in each housing unit. Shuttle service will operate to and from the Knoxville airport on that day. Check-in will continue in a central location throughout the event, but no partial refund will be available for late arrivals. Sleeping rooms may not be available in some facilities until 3:00pm July 23. Checkout is 10:00am Sunday, July 27.

Travel arrangements may be made with TravelTime Services, Inc. Contact the Meetings Department, 800-777-4203.

www.Youth2003.org

DETACH AND RETURN BOTTOM PORTION

REGISTRATION FORM

REGISTRATION FEES: Early Fee is \$335. After January 31, 2003, fee is \$360. Each registration includes 4 nights housing, 11 meals, 7 general sessions, 1 concert, recreational activities, your choice of 5 individual workshops, plus all other conference-related fees.

PAYMENT: A minimum deposit of \$50 for each space you reserve must accompany your registration. Your entire balance due must be postmarked on or before June 2, 2003, to guarantee space.

Number of youth who will attend with my group: _____

Number of adults who will attend with my group: _____

Total spaces reserved: _____

Payment enclosed: \$ _____

Please make all checks payable to **Youth2003**.
Mail payments to: Youth2003, General Board of Discipleship
PO Box 340003, Nashville, TN 37203-0003

CANCELLATIONS: A \$25 cancellation fee will be retained for all cancellations received on or before March 3, '03. After March 3, '03, a \$50 fee will be retained. No refunds available after July 1, '03. Substitutions are welcome at any time. Changes to an existing registration are subject to a \$15 change fee.

SUPERVISION: There must be at least one adult (21 years or older) for every 8 youth (18 years and younger). See **Step 1** of the Instructions for more information.

REGISTRATION QUESTIONS?

Call UT Conferences, (865) 974-0280 or email conferences@utk.edu.

PROGRAM QUESTIONS?

Contact Lori Whitehurst, toll-free (877) 899-2780 Ext. 7176, or youth2003@gbod.org.

Primary Group

Leader Name (MUST BE 21 YEARS OF AGE OR OLDER)

Staff Youth Leader Lay Youth Leader Other

Name of Church

Address

City/State/Zip

E-Mail

Day Phone ()

Other Phone ()

Fax ()

District

Conference

Mail confirmation materials to (if different from above):

Name

Street

PO Box

City/State/Zip

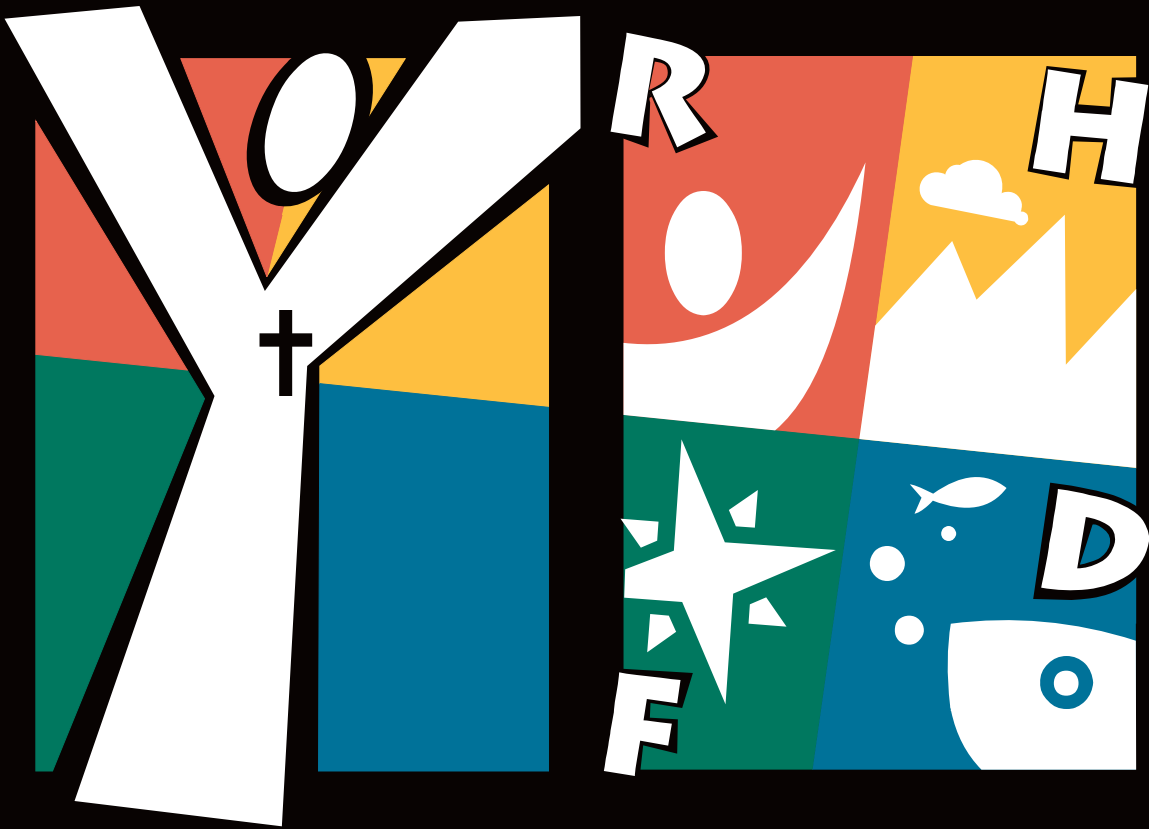
We plan to travel to Knoxville by

- Flying to Knoxville Airport Flying to Nashville Airport
 Bus (How many) _____ Van (How many) _____
 Car (How many) _____ Undecided

Have you visited www.youth2003.org? Yes No

The General Board of Discipleship of
The United Methodist Church
PO Box 340003
Nashville, TN 37203-0003

Non-Profit Org.
U.S. Postage
PAID
Nashville, TN
Permit #185



YOUTH03 reach higher, deeper, further

July 23-27
Knoxville TN

2003

